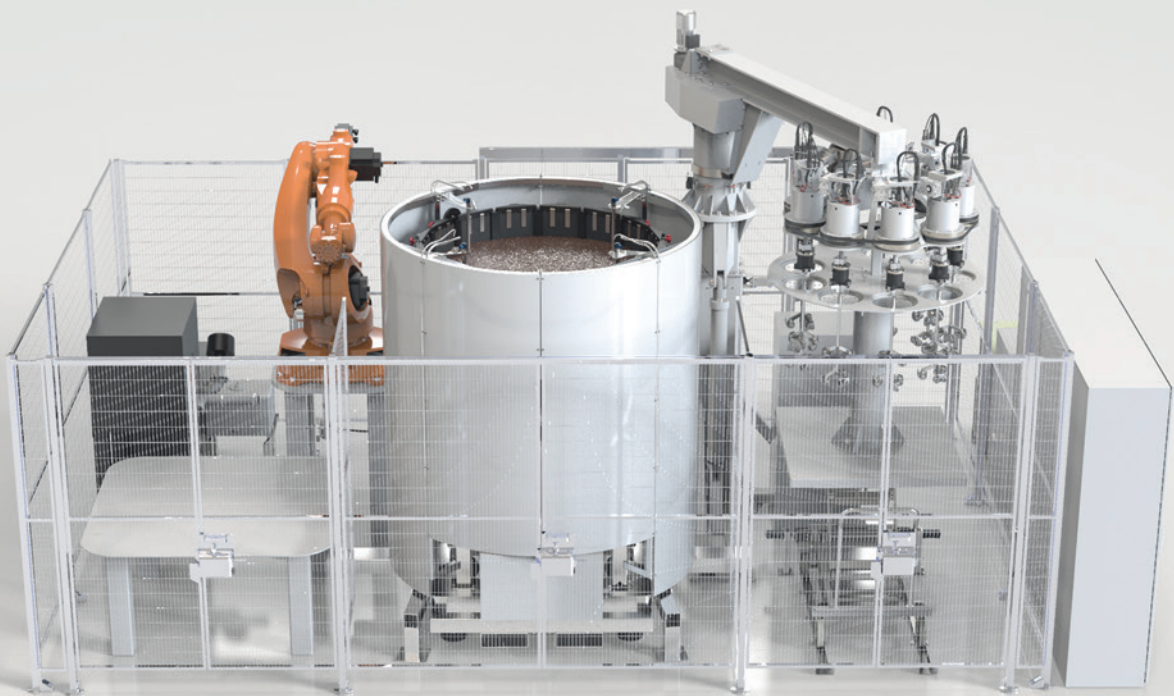


DLyte 10.000

SOLUTION FOR MASS PRODUCTION,
COMPLEX & LARGE GEOMETRIES

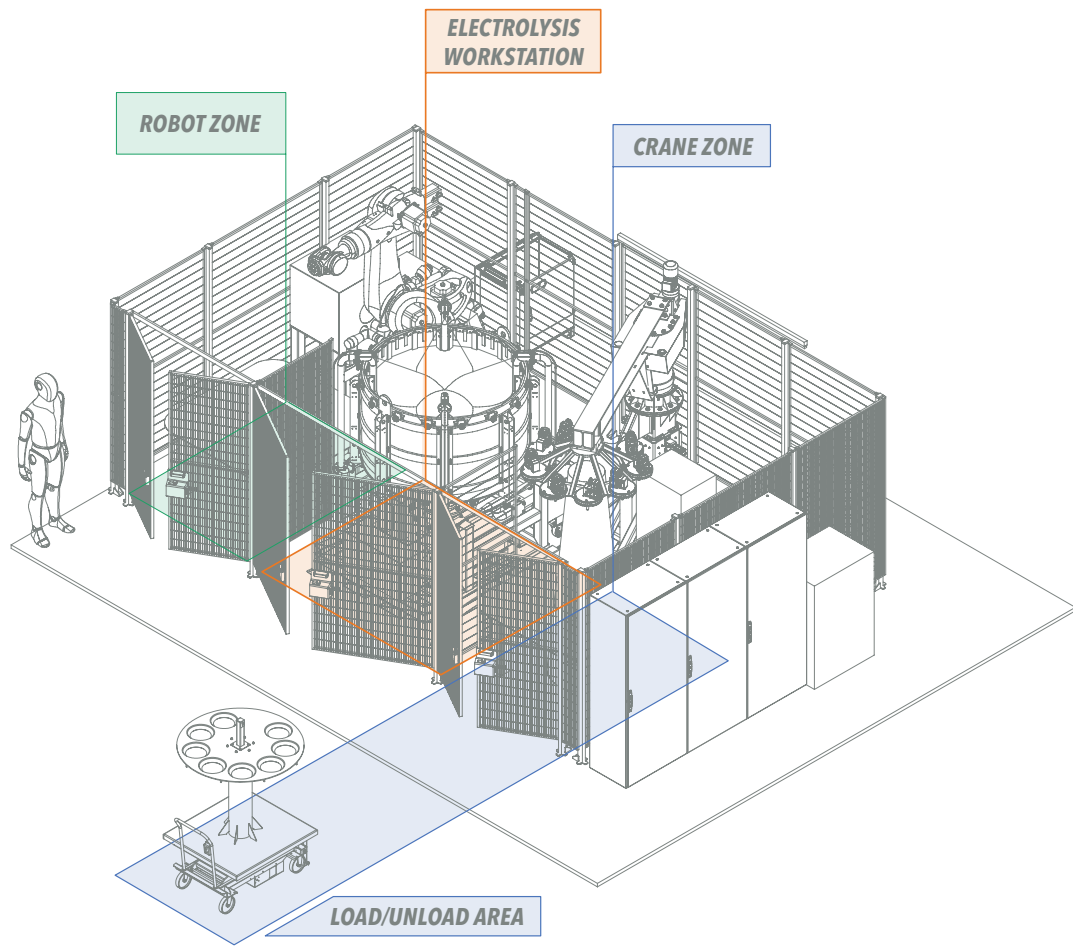


First dry electropolishing solution for Mass Production, Complex & Large Geometries



"Unlike existing systems, Dlyte technology allows digitalization of post production processes and the standardization of the final product achieving high quality results."

DLyte10.000 working areas



- **ROBOT ZONE**
Special for large parts and complex geometries
- **ELECTROLISYS WORKSTATION**
DryLyte Technology
Bucket capacity: 1200 liters
- **CRANE ZONE**
Special HOLDERS for mass production

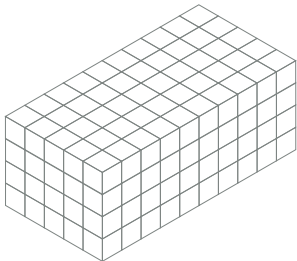
Mass production, complex and large geometries

Suitable for different polishing needs and processes

Crane for mass production



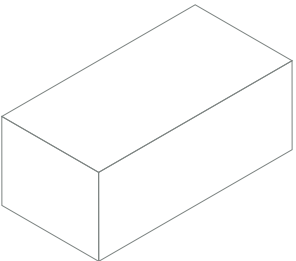
200 pieces up to 50x50x50mm



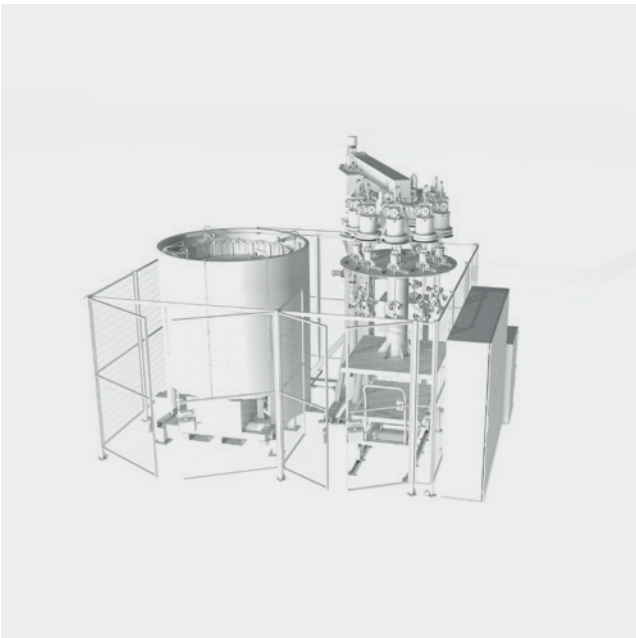
Robot for complex and large geometries



1 piece up to 750x500x500mm



Crane + One Workstation



Standard solution to polish homogeneous materials.

Crane + Two Workstations

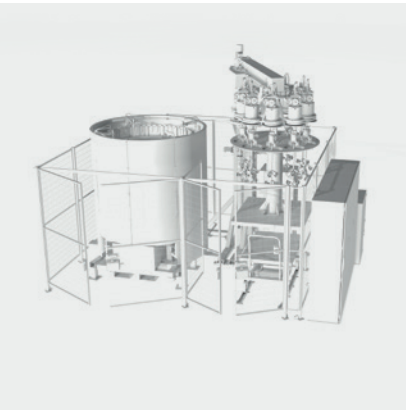


Capability to work with two different materials without changing the electrolysis media.

Enhance the polishing result by applying more than one workstation.

Different layouts

Configurations with one Workstation



01. Crane + Workstation

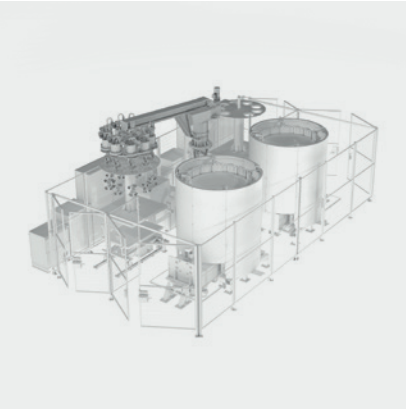


02. Robot + Workstation



03. Crane + Robot + Workstation

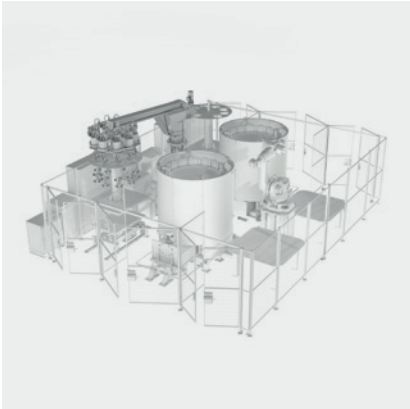
Configurations with two Workstations



04. Crane + Two Workstations

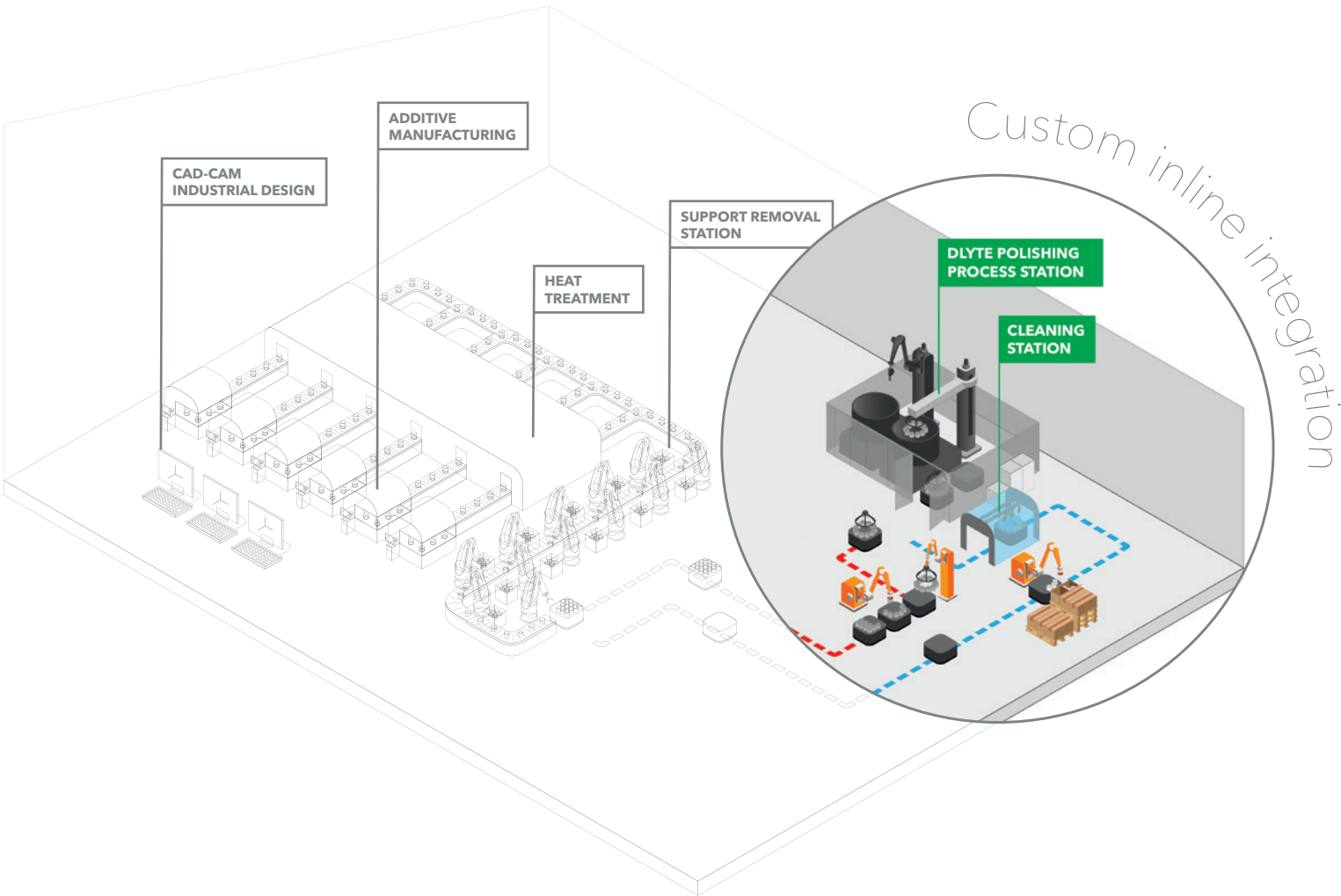


05. Robot + Two Workstations



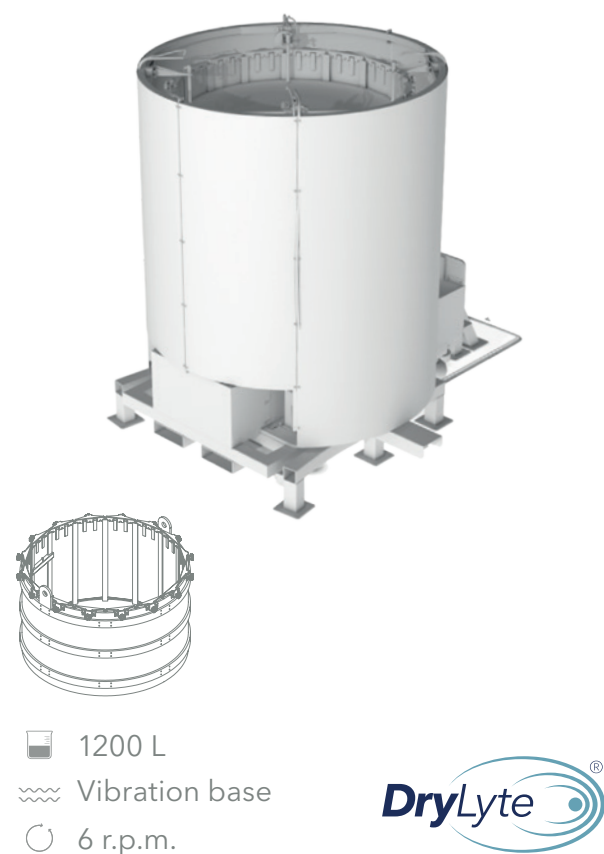
06. Crane + Robot + Two Workstations

Inline Integration



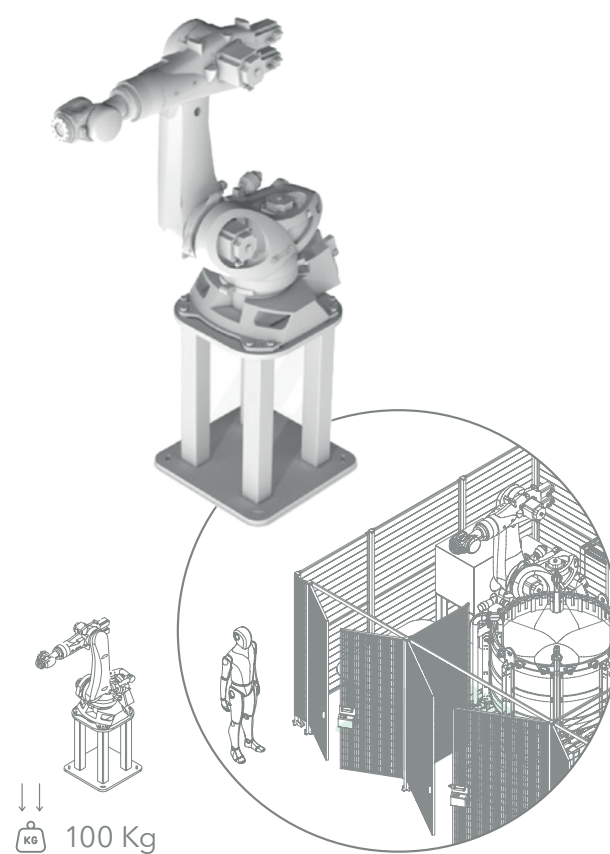
Our new DLyte10.000 modular machine can be fully integrated on your production line. Due to the high capacity and automation of DLyte our solution allows continuity into the new industrial systems of mass production.

Electrolysis workstation



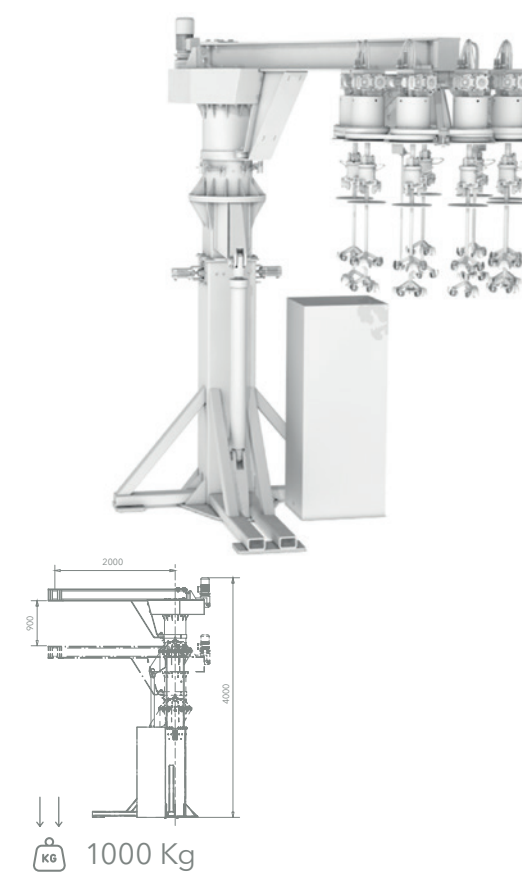
- Rotational Tank + Base
- Capacity of 1200L
- Diameter: 1330mm / Height: 850mm
- 6 r.p.m. clockwise & counterclockwise rotation
- Vibration system

Robot system

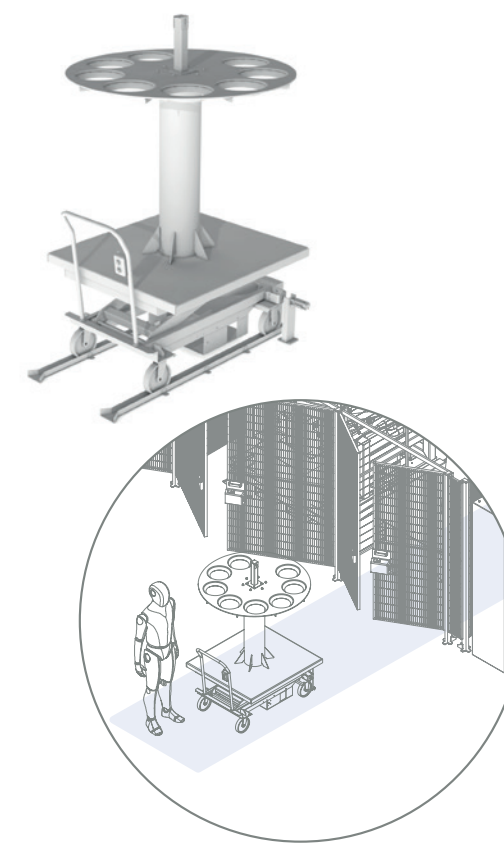


- Large and complex geometries
(Up to 750x500x500)
- Maximum load: 100 Kg
- Frontal load / unload (green area)

Crane system

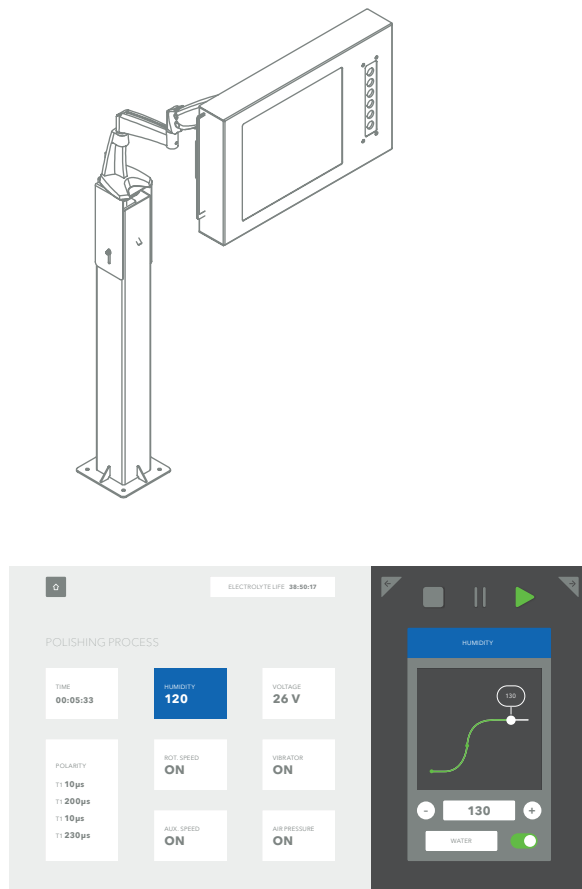


- 1000kg max load
- 4, 6 and 8 holders configurations according to dimensional and capacity requirements



- Outside loading and unloading zone with a trolley (blue area)
- Possibility to work with several trolleys in order to reduce eletropolishing downtime and increase the output.

HMI screen



- User friendly interface
- With parameters configuration management
- Alarms control board
- Real time process control

Machinery guard system



- Safeguarding the work process
- Automatic machine stop in case of door opening
- 2006/42/CE Compliance

Control & electrical cabinets



- Electrical supply cabinet:
4, 8 or 16 power units depending on the polishing process needs
- Electronic control cabinet

Steamer

to be customized

- External cleaning cabin

A company with a large trajectory



Founded in Barcelona in 2013, GPAINNOVA is led by our in house engineers, dedicated to the research and development of solutions for the surface finishing of metal parts. In 2017, we developed the DLyte system, a revolutionary and innovative polishing system delivering outstandingly consistent results, securing our place as the leading manufacturer of dry electropolishing machinery.

Spain

GPAINNOVA

C/Caracas 13-15 Nau 6,
08030 Barcelona (Spain)

T. (+34) 931 256 536
info@gpainnova.com
www.gpainnova.com

United States

GPAINNOVA AMERICA

4622 N. Hiatus Rd.
Sunrise, FL. 33351 (USA)

T. +1 (954) 530 8277
officeusa@gpainnova.com
www.gpainnova.com

China

GPAINNOVA ASIA

Rm.1905, 19/F FWD Financial Centre,
308-320 Des Voeux Road Central,
Sheung Wan, Hong Kong

T. (+852) 25 377 338
officeasia@gpainnova.com
www.gpainnova.com

dlyte.es