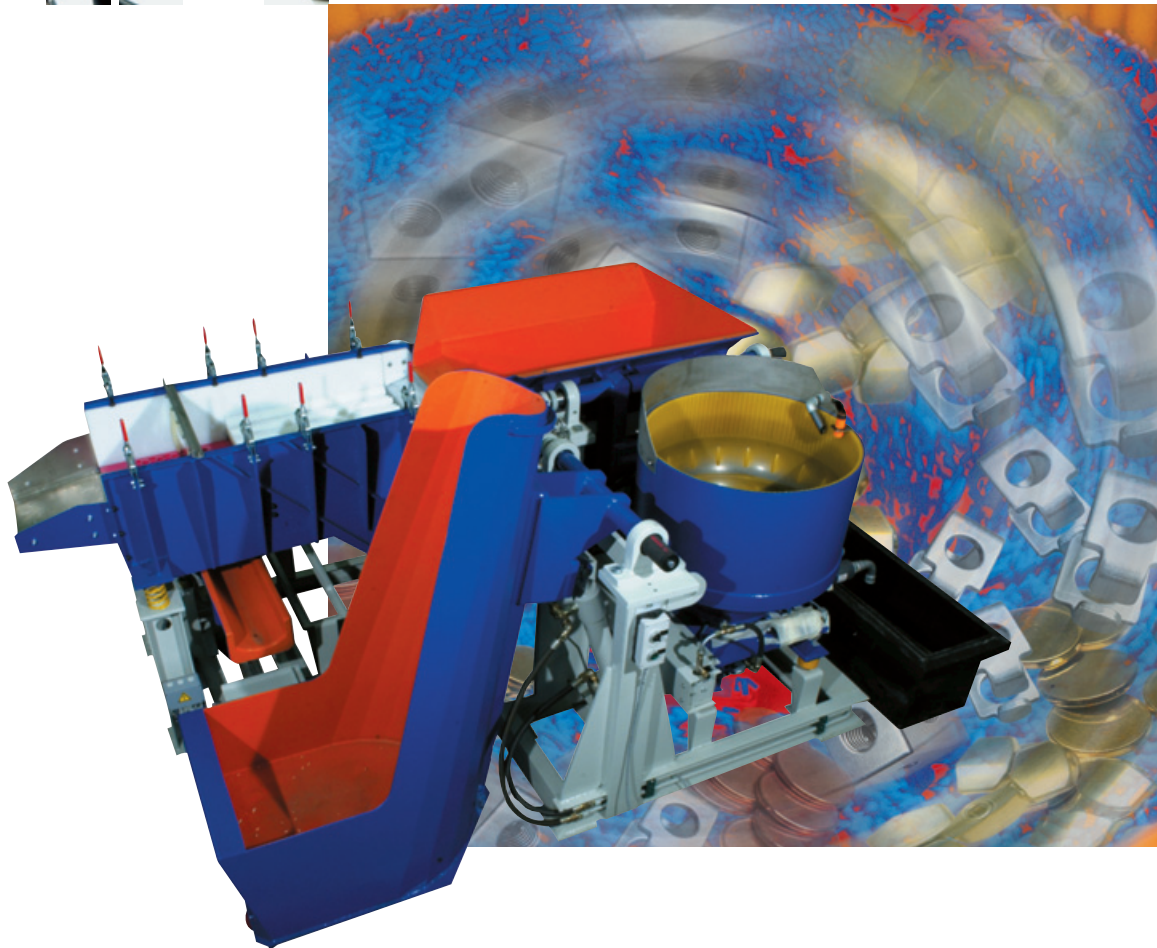




# WALTHER TROWAL!



## TROWAL MASS FINISHING CENTRIFUGAL DISC FINISHING MACHINES DOUBLE BATCH SYSTEM

### Top performance!

Compared to vibrators, **Trowal Turbotron** centrifugal disc finishing machines offer up to 10 times higher grinding performance.

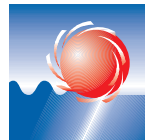
**Turbotron** machines are mainly used for the removal of strong burrs and for the edge radiussing of small and medium size bulk parts. However, due to the application of special processing technologies, **Turbotron** machines are also suited for fine grinding and even polishing "super polishing" operations.

### How it works

The rotating spinner (60 - 250 RPM) accelerates the work piece/media mass to the wall of the stationary work bowl and pushes the mass upwards along the work bowl wall. With decreasing acceleration and increasing gravity the mass slides back down to the spinner where it is again accelerated.



Deburring



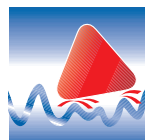
Ball burnishing



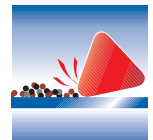
Radiusing



Degreasing



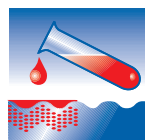
Surface smoothing



Surface cleaning



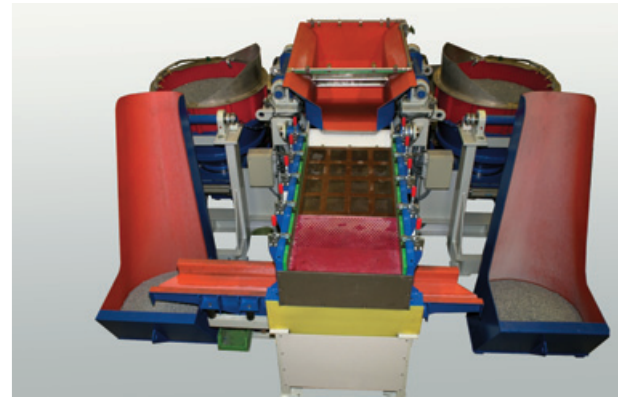
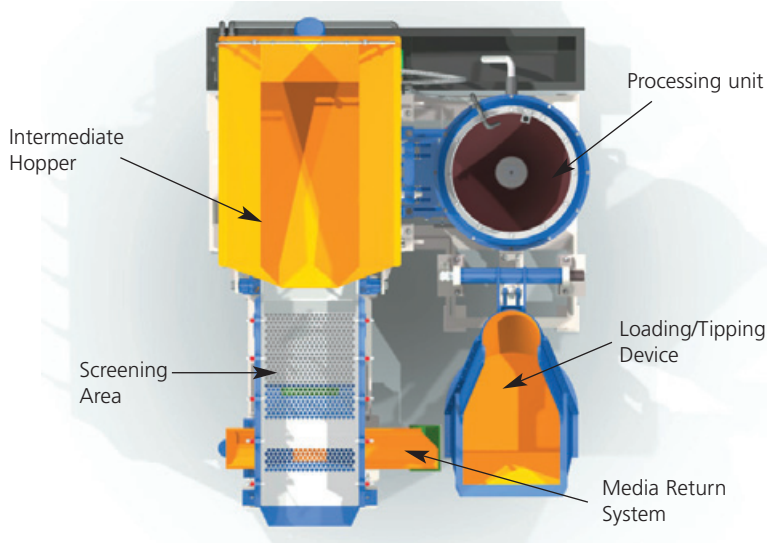
Surface polishing



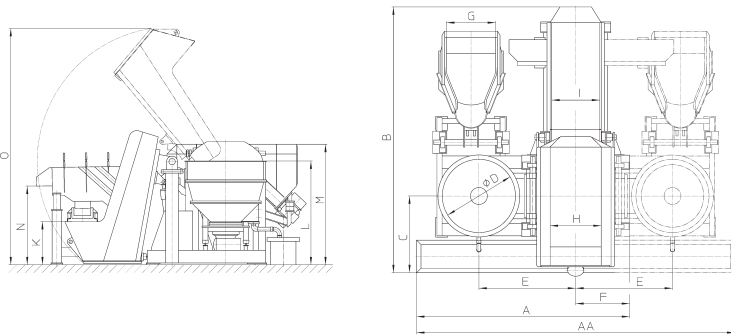
Pickling, descaling

**MASS FINISHING • SHOT BLASTING**  
**COATING OF SMALL PARTS • EFFLUENT TREATMENT**

**WALTHER  
TROWAL!**



TT 280 A/2C, in tandem model



Double batch system		TT 60-A/2C	TT 90-A/2C	TT 140-A/2C	TT 280-A/2C	TT 520-A/2C
Gross volume	litres	60	90	140	280	520
Capacity work pieces*	litres	6 - 40	8 - 60	14 - 100	28 - 200	50 - 400
Material work bowl		Steel/PU				
Drive mode		electric	electric	electric	electric	electric
Spinner power	kW	4	4	11	11/15	30
Speed max. (50 Hz) RPM		213	213	173	179	165
Screening area	m <sup>2</sup>	0,55	0,55	0,55	0,95	0,95

\*Depending on the work piece geometry, material, sensitivity of the parts.  
 The quantity of media and work pieces is determined by these factors.

		A	AA	B	C	D	E	F	G	H	I	K	L	M	N	O
TT 60	A2C*	1930	-	2975	925	544	910	535	540	500	460	425	1065	1220	ca.820	2700
	AT**	-	2800	2975	925	544	910	-	540	500	460	425	1065	1220	ca.820	2700
TT 90	A2C*	1930	-	2975	925	637	910	535	540	500	460	425	1115	1220	ca.820	2700
	AT**	-	2800	2975	925	637	910	-	540	500	460	425	1115	1220	ca.820	2700
TT 140	A2C*	2300	-	3200	1050	740	1035	605	590	500	460	490	1255	1345	ca.950	3000
	AT**	-	3370	3200	1050	740	1035	-	590	500	460	490	1255	1345	ca.950	3000
TT 280	A2C*	2700	-	3375	975	914	1230	680	625	650	610	550	1320	1530	ca.1000	3025
	AT**	-	4050	3375	975	914	1230	-	625	650	610	550	1320	1530	ca.1000	3025
TT 520									Upon request							

\* Automatic double batch machine \*\* Automatic four-batch tandem machine

**Advanced machine technology**

- Optimum dynamic geometry of spinner and work bowl
- Infinite water level control
- Infinitely adjustable speed of the spinner
- Automatic gap control via PLC gap can be adjustable with a precision of 0.01mm
- Rinsing of gap prevents premature wear of spinner and work bowl
- Anti-blocking system prevents "seizure" of the spinner
- Additional protection of spinner and work bowl by temperature control in the gap area

**The double batch system**

- While **one batch with finished parts** is separated on the screening machine
  - a **second batch** is processed in the work bowl
- In this manner costly idle times – especially for parts/media separation – can be minimized and maximum productivity.
- Double batch systems are ideally suited for **automation**.

**Tandem Systems**

Tandem systems – a version of the double batch system – are used for applications with relatively long processing times and short separation times:

Tandem systems have 2 work bowls but only one intermediate hopper and screening machine.

The combined intermediate hopper and screening machine is used alternatively by the 2 work bowls.

**Advantage: Saving in cost and space requirements!**

**Walther Trowal GmbH & Co. KG**

Rheinische Str. 35 - 37 • D-42781 Haan  
 Phone: +49(0)21 29-5 71-0  
 Fax: +49(0)21 29-5 71-2 25  
 E-mail: info@walther-trowal.de  
 Internet: www.walther-trowal.de